



# WMF 9000 F

FULL-FLAVOURED FILTER COFFEE,  
ON A GRAND SCALE.

# Contents

---

4

WMF 9000 F

6

Features & Innovations

20

Technical Data Overview

22

Customer Service

24

Accessory Equipment

26

WMF PhotoSimu App

28

Contact Details

---

# WMF 9000 F

FULL-FLAVOURED FILTER COFFEE,  
ON A GRAND SCALE.

"I need a fully automated coffee machine that can brew large amounts of first-class filter coffee, quickly and with no problems. Quality and quantity go hand in hand in the WMF 9000 F, which for me makes it the perfect partner."

Whether your goal is to provide full-flavoured filter coffee for a conference room full of demanding business people, or to ensure there is always fresh batch for high volumes of hotel guests to serve themselves at breakfast, the WMF 9000 F can satisfy your needs, rapidly and reliably. Depending on the version you choose, this slim but powerful machine can deliver either 500 cups of aromatic filter coffee per hour from an integrated storage tank (Internal Storage model) or 100 litres per hour dispensed into external warmers via a quantity brewing arm (External Storage model). During preparation via the

quantity brewing arm, an optimised brewing process achieves a consistent concentration of high-quality filter coffee with a very fast preparation time. With both versions, the swing-out pot brewing arm allows you to dispense freshly made filter coffee into pots of up to 2.8 litres. And all this with maximum flexibility and control, thanks to the interactive menu on the 10" colour touch display, which lets you set both the brewing quantity and the post-brewing quantity. In short, the WMF 9000 F is the ideal solution for providing full-flavoured filter coffee, the way you want it, as fast as you need it.



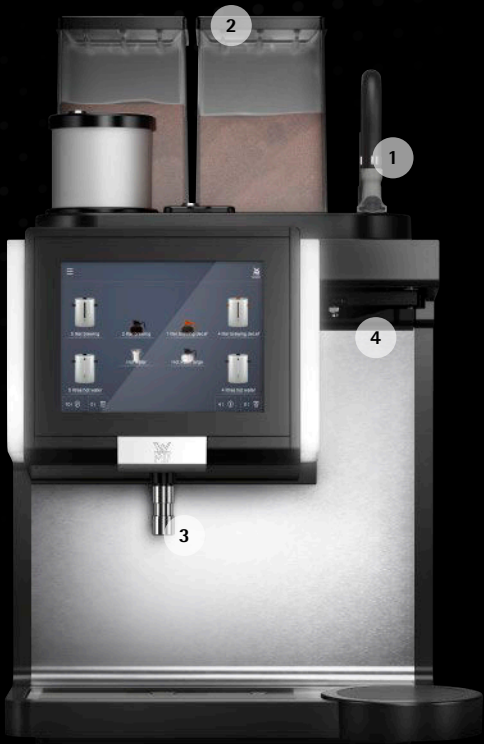


# Features & Innovations

FOR WMF CUSTOMERS,  
THE FUTURE COMES AS STANDARD.

Available in two different versions, the WMF 9000 F boasts all the advanced functions required in any situation where high volumes of high-quality filter coffee are demanded, whether in a mass catering or self-service environment.

The WMF 9000 F automatic filter coffee machine combines high performance, excellent coffee quality, and user-friendly operation. Each of its two versions offers a variety of innovative features to satisfy the requirements of the mass catering sector as well as high-volume, self-service venues. Naturally, both versions of this fully automated filter coffee machine share the premium materials, advanced technology, and robust construction you expect from WMF, ensuring many years of reliable and profitable service.



WMF 9000 F (External Storage)

- 1 Quantity brewing arm
- 2 2 ground coffee hoppers
- 3 Hot water spout
- 4 Pot brewing arm



WMF 9000 F (Internal Storage)

- 1 Internal storage
- 2 Coffee spout
- 3 Hot water spout
- 4 Pot brewing arm

# Performance

DELIVERING A PREMIUM COFFEE EXPERIENCE



## SWING-OUT POT BREWING ARM

During preparation via the pot brewing arm, coffee is dispensed into an external pot or jug. The pot brewing arm is optimized for filling pots of up to 2.8 litres in capacity, and can be extended to fill different pot sizes (up to 175 mm wide, 398 mm tall). Available for both versions.

## HIGH-CAPACITY BREWER

The high-capacity brewer combines high volume with easy accessibility. The large brewing chamber, with a capacity of up to 200 grams, does more than simply ensure top performance. Its design also guarantees convenient access to all service parts. Available for both versions.

## HOT WATER BOILER

The high-quality hot water boiler in the WMF 9000 F has a capacity of 6.5 litres. It is designed for easy opening by a technician for maintenance. Available for both versions.

## WMF 9000 F (External Storage)



## QUANTITY BREWING ARM

The brewing arm dispenses the coffee in brewing batches of 1 to 5 litres into a heated external thermal container with automatic brewing. In this case, the brewing quantity can be up to 5 litres, depending on the size of the container.

## OUTPUT 100 LITRES PER HOUR

Based on the requirements of mass catering, this version of the WMF 9000 F supplies an additional brewing quantity of up to 100 litres per hour to an external container with automatic brewing. This makes it particularly suitable for locations with a high coffee consumption.

## WMF 9000 F (Internal Storage)



## INTEGRATED STORAGE CONTAINER

Designed for controlled dispensing, the integrated 4-litre storage container lets you set the maximum brewing quantity, choosing from one, two or four litres. You can also determine a maximum storage period, and decide whether post-brewing should begin automatically when the storage container has been emptied.

## LARGE GROUND COFFEE HOPPER

The large, lockable container holds 2.5 kg of ground coffee as standard, and can be expanded to a capacity of up to 3.8 kg as an option.

## UP TO 500 CUPS PER HOUR

The Internal Storage version of the WMF 9000 F delivers an output of up to 50 litres (or 500 cups) per hour, ensuring that filter coffee enthusiasts never have to wait long for their beverages.

## BREWING BATCHES 1-4 LITRES

The WMF 9000 F (Internal Storage) can prepare individual brewing batches of between 1 and 4 litres of aromatic filter coffee.

# Versatility

OUR INNOVATIONS, YOUR WAY



## MANUAL INSERT OF FURTHER COFFEE TYPES

To offer the benefit of greater choice, up to 180 g of an additional coffee type, such as decaffeinated filter coffee, can be dispensed through the manual insert. Available for both versions.



## HOT WATER OUTPUT

A separate spout directly below the display offers high efficiency and user-friendliness thanks to the fast and flexible dispensing of hot water, even if, for example, only a small amount of water is needed for a pot of tea. Available for both versions.

## WMF 9000 F (External Storage)

### TWO GROUND COFFEE HOPPERS

With two 2.5 kg hoppers available, you have the opportunity to offer two different types of ground coffee, for example regular and decaffeinated. But if you choose to use only one type, you can take advantage of twice the capacity – especially useful at peak times.



## WMF 9000 F (Internal Storage)



### COFFEE DISPENSING OF SINGLE CUPS OR SMALL POTS

A separate coffee spout below the display allows for easy dispensing of small quantities of filter coffee into individual cups or jugs directly from the internal storage container. With this model the hot water output is positioned at the right side of the coffee spout.



# Quality

ENGINEERED FOR CONSISTENT PERFECTION



### DETECTION OF WATER PRESSURE ERRORS

To facilitate the automatic detection of possible water pressure errors, both the water inlet pressure and brewing pressure are monitored by pressure sensors to ensure flawless coffee brewing. Available for both versions.

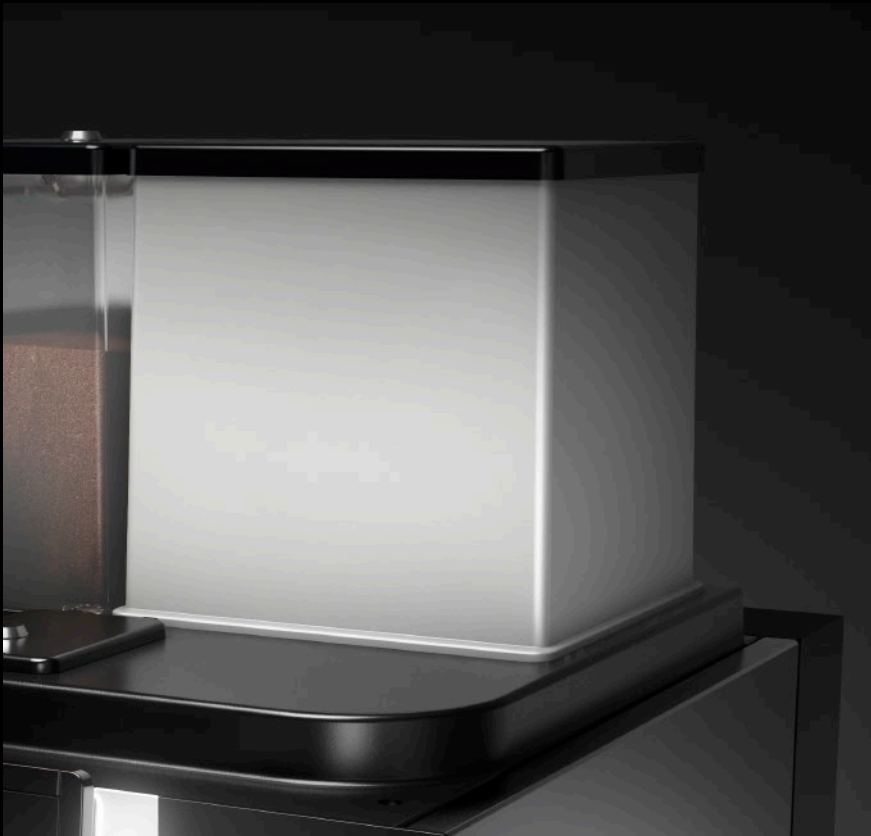
### SMART BREWING FUNCTION

Available when using the pot brewing arm, this intelligent function uses increased contact time between the ground coffee and water to produce a greater beverage volume from the same quantity of ground coffee, while guaranteeing consistently high coffee quality. Available for both versions.

### INTELLIGENT DIAGNOSTIC TOOLS

The WMF 9000 F also offers an integrated diagnostic tool for quick checking of key brewing parameters and fault diagnosis. Your WMF service technician is always available to resolve any issues. Available for both versions.

## WMF 9000 F (Internal Storage)



### STORAGE CONTAINER WITH STAINLESS STEEL INTERIOR

The interior of the integrated 4-litre storage container is made of high-quality stainless steel, maximizing both hygiene and the length of time your coffee stays at the perfect temperature.

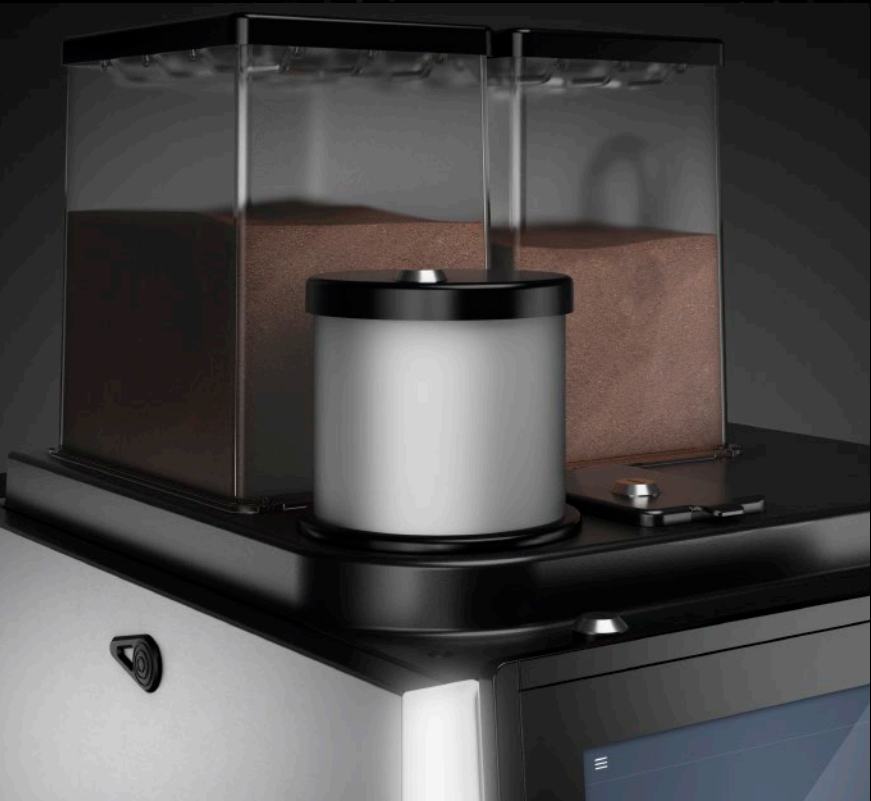
### USER-DEFINED MAXIMUM STORAGE TIME

You can set the maximum storage time before the coffee in the internal storage tank is discarded (up to a maximum of 240 minutes). This ensures your coffee never stands for too long, so every cup will be deliciously fresh.



# Usability

ALL THE FUNCTIONS YOU NEED AT YOUR FINGERTIPS



## GRANULATE DISPENSER

The WMF 9000 F comes with a built-in granulate dispenser for storing the granulate used in the machine's automated, HACCP-compliant cleaning process. Available for both versions.



## 10" COLOUR TOUCH DISPLAY

The interactive 10" colour touch display is designed for easy navigation of the logically structured menu, with large beverage buttons making daily operations fast and simple, and a customizable toolbar for rapid access to preset options. Available for both versions.

## CLEAN LOCK

To ensure maximum user convenience, the interactive colour touch display of the WMF 9000 F can be temporarily switched off or locked to facilitate cleaning without malfunctions. Available for both versions.

## EASY AUTOMATIC CLEANING

Taking advantage of a cleaning granulate dispenser, the cleaning processes of this automatic filter coffee machine are automatic, efficient and, above all, HACCP-compliant. Available for both versions.

## OPTICAL SIGNALLING

The coloured side panels of the WMF 9000 F are illuminated with LED lighting, which can be adjusted to suit your ambience. Moreover, the panels flash when action is required, for example when it is time for a refill. This simple feature quickly attracts the operator's attention, even from a distance. Available for both versions.

## TIMER FUNCTIONS

The WMF 9000 F can be set to turn itself on and off, or activate and deactivate certain functions and beverages, whenever you want. Available for both versions.

## GROUNDS DISPOSAL

Used coffee grounds are efficiently disposed of, following the principle of wet disposal, either directly into the drain or in a grounds separator located discreetly under the counter. Available for both versions.

## LOCKABLE, REMOVABLE HOPPERS

The large ground coffee hoppers on the WMF 9000 F can be locked to ensure their precious contents are stored in total safety, and removed for easy filling and cleaning. Access to the interior of the machine is also protected by the lockable front panel. Available for both versions.



# Customisation

TAILOR YOUR COFFEE MACHINE TO YOUR BUSINESS



## BRANDING

The WMF 9000 F is ready to adapt to your specific requirements. That includes the option of featuring your own logo on the display screen menus. Available for both versions.

## WMF 9000 F (External Storage)

### POST-BREWING FUNCTION UP TO 100 LITRES

Designed to meet the special requirements of mass catering, the WMF 9000 F (External Storage) can deliver individual brewing batches of between 1 and 5 litres of aromatic filter coffee. Using the adjustable post-brewing function of the warmer, the post-brewing level can be set to a maximum of 100 litres.



## WMF 9000 F (Internal Storage)



### IMMEDIATE BREWING

The integrated 4-litre storage container has a handy immediate brewing function that you can use when needed. For example, on arrival of a coach full of customers, an immediate brewing quantity of 1 litre, 2 litres or a maximum of 4 litres can be activated.

### SELF-SERVICE OPERATION

Along with the machine's versatile brewing and dispensing options, the intuitive operating concept makes this version of the WMF 9000 F ideally suited to self-service operation.

### ADVERTISING

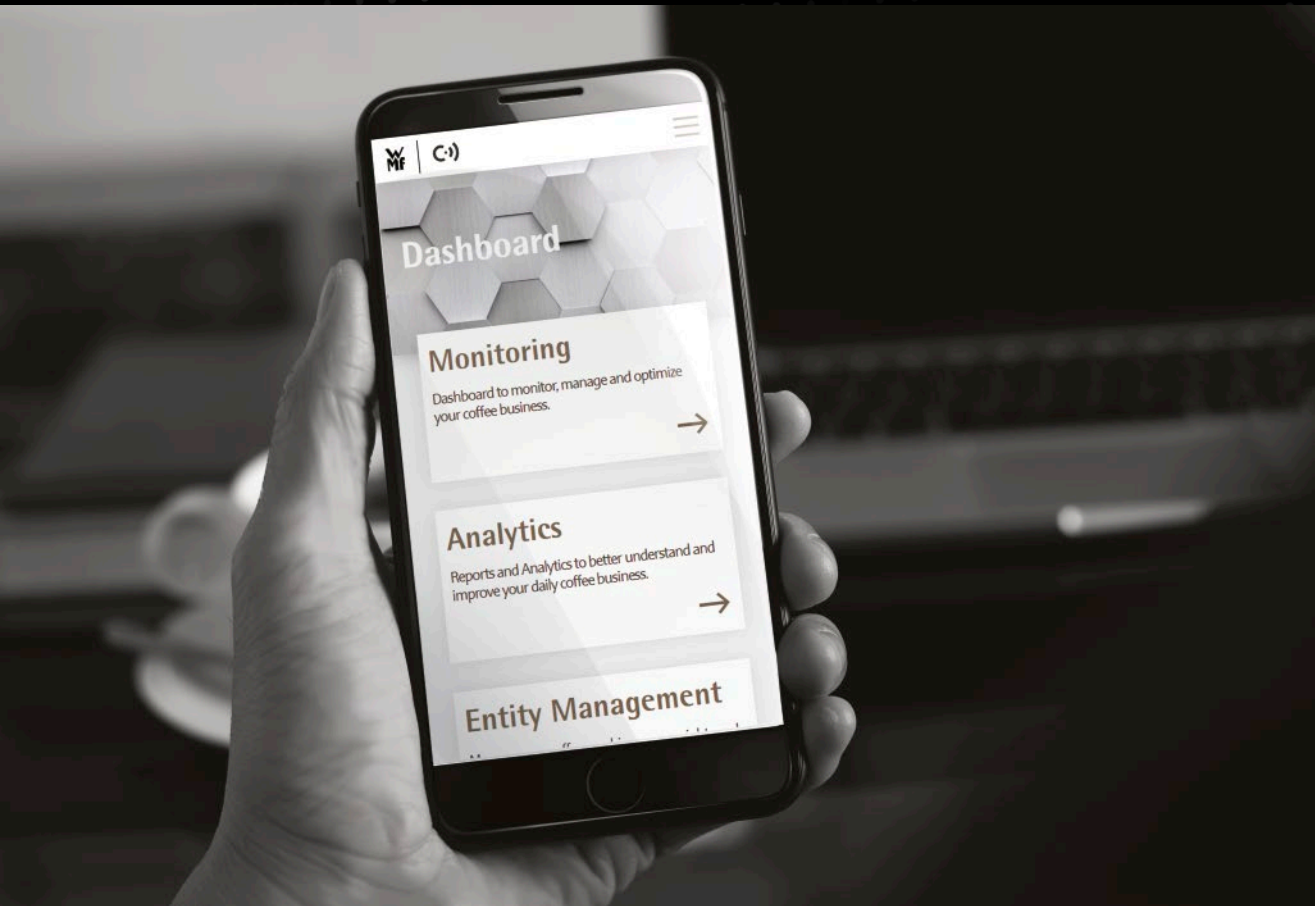
The colour touch display offers you opportunities to increase sales through eye-catching advertising or tailored special offers. So while your customers' beverages are being prepared, you can take advantage of their time and attention.

### VENDING MACHINE CONNECTION

A compatible vending machine can easily be connected to the WMF 9000 F to facilitate customer payments in self-service situations.

# Connectivity

COFFEE EXCELLENCE MEETS DIGITAL SOLUTIONS



## WMF COFFEE CONNECT

WMF CoffeeConnect is our pioneering digital cloud platform. It transforms the potential of your WMF coffee machine and any other connected machines, giving them the ability to provide valuable data and receive instructions remotely. By collecting, analysing and processing information on sales, operation, consumption and maintenance, WMF CoffeeConnect gives you the power to optimize processes and reduce service costs. And that's only the beginning. You can also use it to increase turnover by sending advertising and special

offers directly from your desk to the machine's display. WMF CoffeeConnect offers functions to suit every requirement in the areas of machine management, maintenance and operation, and business performance. These functions are available in the form of either dashboard monitoring or reports. Additionally, our experts can create tailor-made analysis according to your needs, allowing you to take advantage of sophisticated Business Intelligence to gain in-depth insights into your coffee business.

## DATA SECURITY

We know that your data is crucial to your business success. That is why the platform we have developed for WMF CoffeeConnect meets state-of-the-art infrastructure standards. The service offering is protected against cybercrime by a multi-layered IT architecture. We have also implemented a cutting-edge Identity and Access Management system that supports IoT requirements, providing multi-factor and role-based access to data and systems.

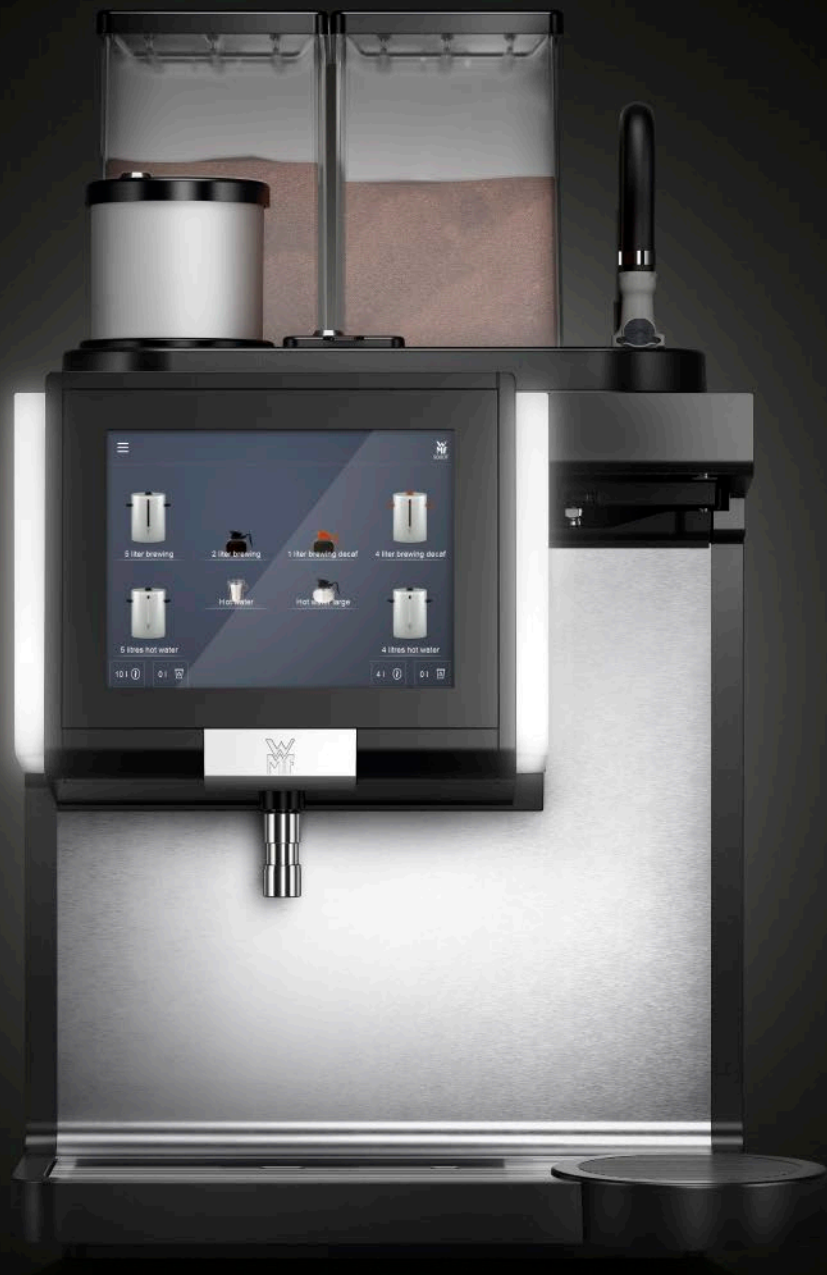


## HACCP COMPLIANCE

All WMF professional coffee machines support HACCP-compliant operation with ease. For example, cleaning records are available to download, complete data backups can be performed, and software updates are available via USB stick.

# Technical Data Overview

ALL THE FACTS AND FIGURES YOU NEED



450 mm



605 mm



782 mm

	WMF 9000 F (External Storage)	WMF 9000 F (Internal Storage)
Recommended for an average daily requirement of*	100 l / hour	500 cups or 50 l / hour
Quantity brewing	√	-
Pot brewing	√	√
Integrated storage container	-	√
Ground coffee hopper	2 * 2.5 kg, expandable to 3.8 kg	1 * 2.5 kg, expandable to 3.8 kg
Coffee dispensing of single cups	-	√
Hot water output	√	√
Self-service operation	-	√
Coffee grounds disposal	√	√
Automatic cleaning with granulate dispenser	√	√
LED illumination	√	√
Nominal power rating / mains power connection	8.5 - 10.1 kW / 380 - 415 V	8.5 - 10.1 kW / 380 - 415 V or 12.4 - 14.7 kW / 380 - 415 V
External dimensions (width / height** / depth)	450 / 782 / 605 mm	450 / 782 / 605 mm
Water supply	Fixed water connection	Fixed water connection
Empty weight	Approx. 65 kg	Approx. 65 kg
Continuous sound pressure level (LpA)***	< 70 dB (A)	< 70 dB (A)

\* Output is determined using a machine with fixed water supply and is dependent on cup size, quality settings, spout, model and nominal power rating. The recommended maximum daily capacity is based on our catalogued service concept. However, these average values serve merely as a guideline. Let our trained WMF team match the ideal coffee machine design to your specific needs.  
\*\* Height including coffee bean hoppers  
\*\*\* The A-rated sound pressure level LpA (slow) and LpA (impulse) at operating personnel work stations is under 79 dB(A) in any operating mode. Above 5° dKH (carbonate hardness), a WMF water filter must be fitted.



# WMF Services

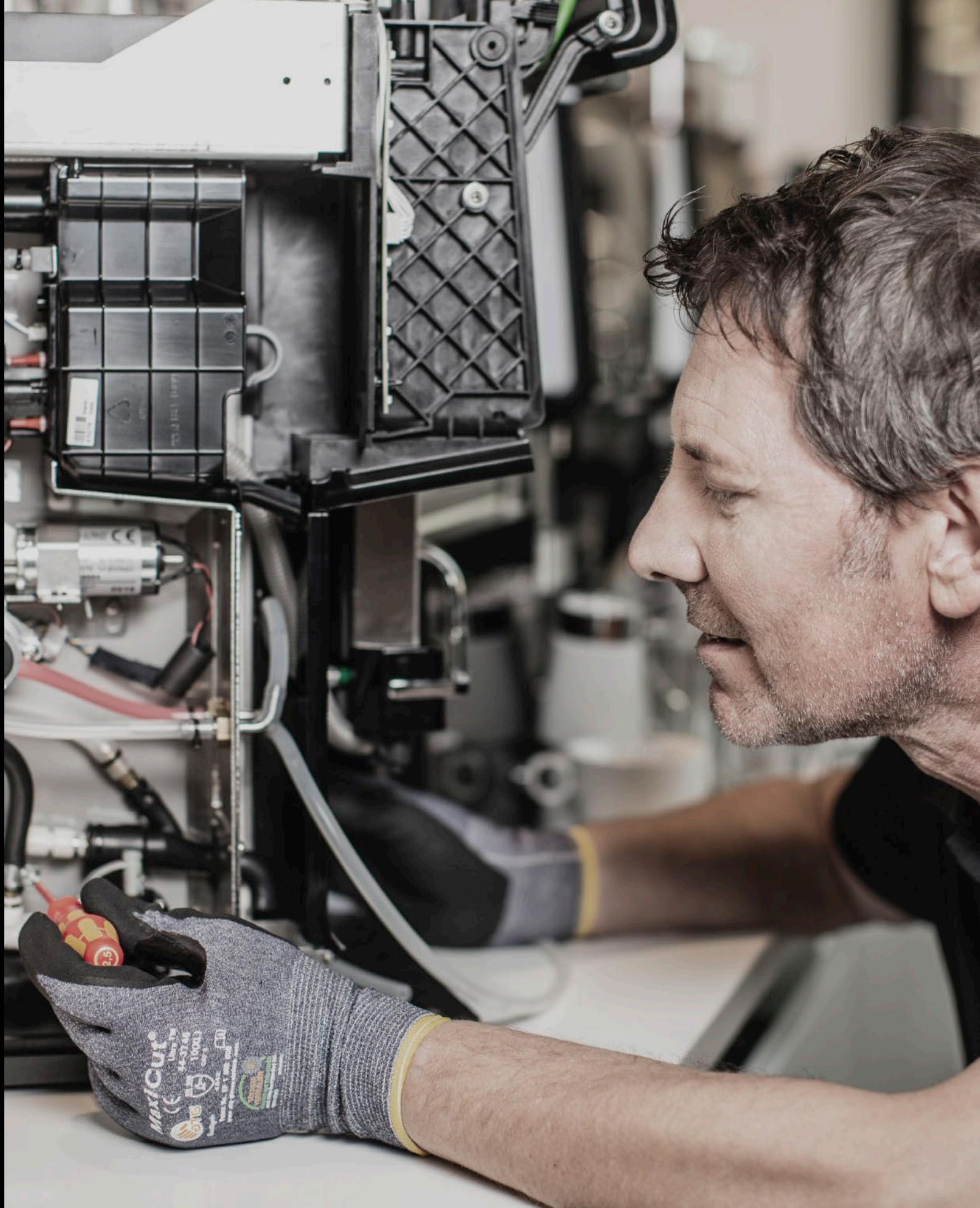
PROVEN EXCELLENCE  
AROUND THE GLOBE

At WMF, we are committed to your success and therefore offer service solutions that help our customers all over the world to get the best out of their machine.

**Whatever the challenge, we provide the solution**  
As coffee is served in many different environments, our customer base is quite diverse. With almost 100 years of experience, WMF understands the challenges our customers face like nobody else. This wealth of experience is the basis for all our service designs.

CUSTOMER SATISFACTION	DAY-TO-DAY OPERATIONS	COMMERCIAL SUCCESS
 <b>Machine Availability</b> Your ability to serve your customers at all times.	 <b>Operational Skills</b> Making sure machine and staff work hand in hand to please your customers.	 <b>Plannable Follow-up Costs</b> Avoiding surprises and finding the right level of commercial stability.
 <b>Coffee Quality</b> Serving your customer a premium and consistent coffee quality.	 <b>Regulatory Compliance</b> Staying compliant with health, safety, security and environmental regulations.	 <b>Investment Protection</b> Maximising the lifetime of your coffee machine.

**For a long life of reliable performance**  
WMF coffee machines are a quality product and, together with our services, will perform over a very long lifetime. Truly understanding our customers' needs, we have developed standard service packages and add-ons that can be perfectly combined to satisfy your individual requirements. The fact that we only get one chance to make a first impression inspired the design of our installation services to deliver the right start to your success. Our preventive maintenance will ensure your machine always achieves its optimum performance, while we are by your side when you need us most with our repair services.



# Accessory Equipment

LASTING WARMTH,  
STRIKING STYLE.

Equipped with an adjustable post-brewing function, WMF heated thermal containers perfectly complement your WMF 9000 F filter coffee machine in terms of both form and function.

The range of heated thermal containers for use with the WMF 9000 F (External Storage) includes an insulated pot with a 2.4-litre capacity, which can be filled from the pot brewing arm, as well as a 20-litre model and a 40-litre model, made of double-walled stainless steel, seamlessly welded, and featuring a no-drip stainless steel tap and an integrated glass gauge with aluminum casing. Each container in the range is engineered to ensure many years of reliable service. They are designed to hold filter coffee at a temperature of around 85°C.



	THERMAL CONTAINER	HEATED THERMAL CONTAINER	HEATED THERMAL CONTAINER
Post-brewing function	-	√	√
Maximum capacity	2.4 litres	20 litres	40 litres
Material	Stainless steel outside, glass inside	Double-wanded stainless steel, seamlessly welded	Double-wanded stainless steel, seamlessly welded
Integrated gauge glass	√ Plastic casing	√ Aluminium casing	√ Aluminium casing
No-drip tap	√	√ Stainless steel	√ Stainless steel
Holding temperature	-	Approx. 85°C	Approx. 85°C
Additional set of legs	-	√ 150 mm	√ 150 mm
Weight empty / full	3.0 kg / 5.5 kg	11.2 kg / 31.2 kg	19 kg / 59 kg
Available for	WMF 9000 F (External Storage) WMF 9000 F (Internal Storage)	WMF 9000 F (External Storage)	WMF 9000 F (External Storage)



# WMF PhotoSimu App

VISUALIZE YOUR WMF COFFEE MACHINE  
IN YOUR BUSINESS.

Want to know what a WMF professional coffee machine would look like in your own place of business? With the WMF PhotoSimu app, you can use your smartphone or tablet to easily project your chosen product configuration in your own business – exactly as it would appear. Just download the app to get started.

Download the app with the help of the QR code, scan then the location where you want to place your machine and you are ready to go. Thanks to Augmented Reality you will see your preferred machine either in a 3D room or in your real environment, photorealistic and true to its actual dimensions and design. The option to add accessories gives you the chance to see the complete solution of coffee machine and equipment in your business – ingeniously easy and intuitive.

Thanks to our new features, you can now find full product information at a glance and contact us directly via the app to send us your request.

iOS



Android





# Contact Details

GET IN TOUCH TO FIND OUT MORE



A

**WMF GmbH**  
WMF Platz 1  
73312 Geislingen/Steige

+49 7331 258 482  
PCM@wmf.com  
www.wmf-coffeemachines.com

B

**WMF Austria**  
Langer Weg 28  
6020 Innsbruck

+43 512 3302  
gastro@wmf.at  
www.wmf-kaffeemaschinen.at

C

**WMF in Switzerland**  
Allmendweg 8  
4528 Zuchwil

+41 32 681 62 00  
vertrieb.schweiz@schaerer.com

D

**SEB PROFESSIONAL BeLux BV**  
Halfstraat 5\_18  
B-2630 Aartselaar | Belgium

+32 828 11 28  
Belgium@seb-professional.com  
www.wmf-coffeemachines.com/nl\_be

E

**SEB PROFESSIONAL Iberia S.A.**  
Avda. Llano Castellano, 15  
28034 Madrid | España

+34 91 3341216  
Spain@seb-professional.com  
www.wmf-coffeemachines.es  
www.wmf.com

F

**SEB PROFESSIONAL UK Limited**  
31 Riverside Way  
UB8 2YF Uxbridge

+44 1895 816100  
UK@seb-professional.com  
www.wmf-coffeemachines.uk.com

G

**SEB PROFESSIONAL France SARL**  
16-18 rue Dubrunfaut  
75012 Paris | France

+33 1 49 80 80 10  
France@seb-professional.com  
www.wmf-coffeemachines.fr

H

**SEB PROFESSIONAL Nederland B.V.**  
Gyroscoopweg 82-84  
1042 AX Amsterdam

Showroombezoek op afspraak  
+31 20 480 80 85  
Netherlands@seb-professional.com  
www.wmf-coffeemachines.com/nl\_nl

I

**SEB PROFESSIONAL Japan**  
13F Hamarikyu Parkside Place  
5-6-10 Tsukiji, Chuoku Tokyo, 104-0045

+81 3 3541 1941  
Japan@seb-professional.com  
www.wmf-japan.co.jp

J

**SEB PROFESSIONAL (Shanghai) Co., Ltd.**  
1318 North Sichuan Road, ICP, Unit 1101  
200080 Shanghai

+86 21 2601 6308  
China@seb-professional.com  
www.wmf-coffeemachines.com

K

**SEB PROFESSIONAL LATAM & Caribbean**  
Guadalupe 10801 | P.O Box 75-2120 |  
Goicoechea, San Jose | Costa Rica

+506 7016 9885  
LATAM@seb-professional.com  
www.wmf-coffeemachines.com

L

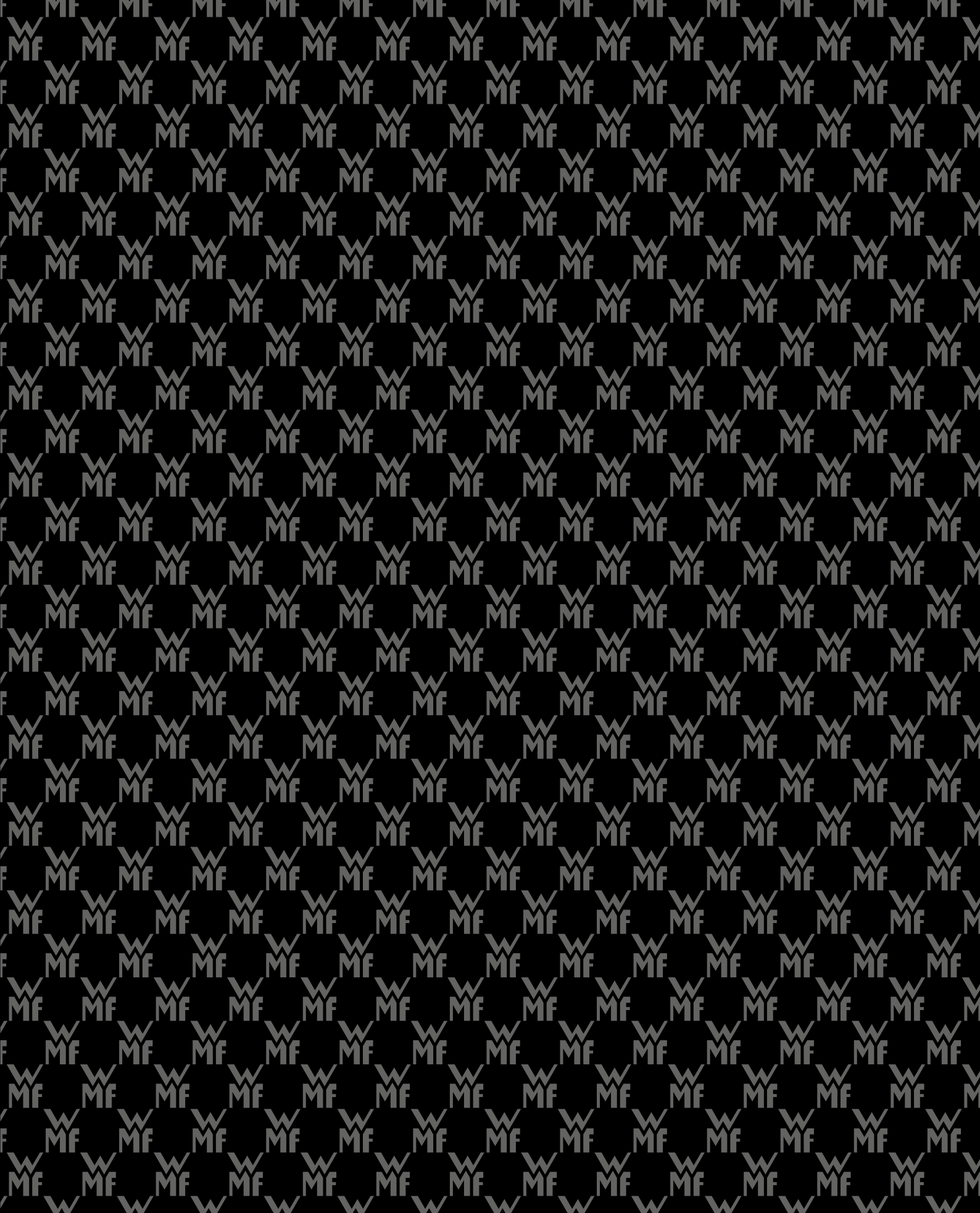
**SEB PROFESSIONAL North America**  
15501 Red Hill Avenue, Suite 200  
Tustin, California 92648

+1 888 496 3435  
NorthAmerica@seb-professional.com  
www.wmf-coffeemachines.us.com

WMF GmbH  
GBU Professional Coffee Machines PCM  
WMF Platz 1  
73312 Geislingen/Steige  
Germany  
Phone: +49 73 31 - 258 482  
Fax: +49 73 31 - 258 792  
PCM@wmf.com  
www.wmf.com

63.8384.0391  
All technical changes, typographical mistakes  
and errors reserved for the entire contents.

Germany 07.2021





DESIGNED TO PERFORM

---

[wmf.com](http://wmf.com)